



Marshland High School Home School Agreement – Success Through Learning

Commitment by Marshland High School

We believe every student is capable of academic and personal success and that it is through hard work on the part of your child, with our support, that their potential will be realised.

Learning – Marshland staff will:

- Provide great teaching that enables students, in a positive and supportive environment, to achieve highly.
- Celebrate students' success and best endeavours through our rewards system.
- Provide opportunities for students to regularly complete home learning.
- Offer curriculum enrichment opportunities that develop students' understanding and tolerance of different cultures and provide them with new experiences.
- Invest in their professional development to ensure best practice

Pastoral care will:

- Monitor personal and academic progress to inform and meet individual student needs.
- Go out of our way to get to know each of our students as individuals.
- Prioritise the safeguarding and wellbeing of our students.

Parent-school communication

- We believe that through regular communication we will build a relationship of trust between school and home.
- Through school reports and parent evenings, we will inform parents about the educational progress their child is making.
- We will encourage contact with pastoral and teaching staff by phone and email, endeavouring to reply to parents as soon as possible (usually within 2 working days).
- We promise to welcome parents into our school community.

Behaviour

- We will provide a purposeful school environment where the highest expectations of good pupil behaviour and our school values are championed.
- We will challenge and hold students to account for unacceptable behaviours.

We understand that this commitment will require us to go above and beyond the average expectations of a school. We sign this agreement voluntarily because we believe that Marshland High School is a partnership between parents and staff to create the best possible education for our students.

Signed on behalf of Marshland High School:

Signed: _____ Date: June 2025

Mrs S Swinburn, Assistant Headteacher

Commitment to Marshland High School by parents / carers

I believe my child is capable of academic and personal success and that it is through hard work on the part of my child, with my support, that their potential will be realised. I will:

Learning

- Encourage and support my child to participate in enrichment opportunities.
- Understand that my child will have home learning to complete and that it is my responsibility to see that it is completed in line with the school's expectations.
- Access and use the app 'My Child at School' (MCAS) to support the school and my child with their education.

Healthy living

- Understand Marshland encourages a healthy lifestyle, and I support the choices made by the school.
- Give my child healthy food and drinks to take to school.
- Encourage my child to take part in sporting and physical activities.

Attendance

- Ensure my child arrives to school before the school gate closes at 8:40am.
- **Never** plan and take family holidays or any other extended absence during term time.
- Ensure that my child attends school every day, except when genuinely ill, or other legitimate reason agreed by the school in advance.
- **Always telephone** the school before 8:15am if my child will be absent each and every day, stating clearly the specific reason for the absence. I will follow this up with a letter / medical evidence on the first day of their return when requested to do so by the school. Written evidence is also required for all medical / dental appointments in school hours.
- Understand measures taken by school to support positive attendance are compulsory and non-negotiable.

Uniform and Equipment

- Make sure my child wears the full correct school uniform smartly to school and has their full and correct equipment including an appropriate school bag, ready to learn items and water bottle each day, in keeping with school policies.
- Understand that uniform and equipment violations may result in my child being given a detention, kept out of lessons, collected from school to correct uniform, or us bringing the correct items to school.
- Understand that school takes no responsibility for the damage, loss or theft of personal items, electronic devices or other high value items.

Parent-school communication

- Always make myself available to the school and provide up-to-date contact details.
- Communicate with the school in a timely, respectful and polite manner in line with the School's values.
- Read all reports carefully, attend all parent evenings and check MCAS for behaviour and reward updates.

Social Media Usage

- Closely and regularly monitor my child's use of social media to ensure it is used respectfully, responsibly and safely.
- My own communication on social media in relation to the school community is respectful and responsible and any queries or feedback are raised directly with the school in the first instance.

Behaviour expectations – I understand:

- Marshland High School's values and behaviour standards. I accept and support consequences for failing to meet standards and expectations.
- I have read and understand the school behaviour policy. I will fully support school detentions and other after-school interventions, if issued to my child, in accordance with this policy. I understand attendance is compulsory at detentions and after-school interventions. It is my responsibility to arrange transport after any detention or after-school intervention.

I sign this commitment voluntarily because I believe a partnership between parents and school exists to create the best possible education for my child. I fully support the policies and procedures adopted by the school.

Signed: _____ Date: _____

Print name and relationship to child: _____

Commitment by students of Marshland High School

I will go above and beyond to learn by:

- Arriving at school before the school gate closes at 8:40am.
- Always working, thinking, and behaving in the best way I know how, and showing resilience and **perseverance** to support learning.
- Asking for help if I do not understand something.
- Completing all my home learning to the best of my ability and on time.
- Attending any detention, I may be given.
- Discussing any problem I am having at school with my parents and teachers.
- Being **honest** with myself and with others.
- Arriving punctually to all lessons.

I will go above and beyond to build a safe and respectful community by:

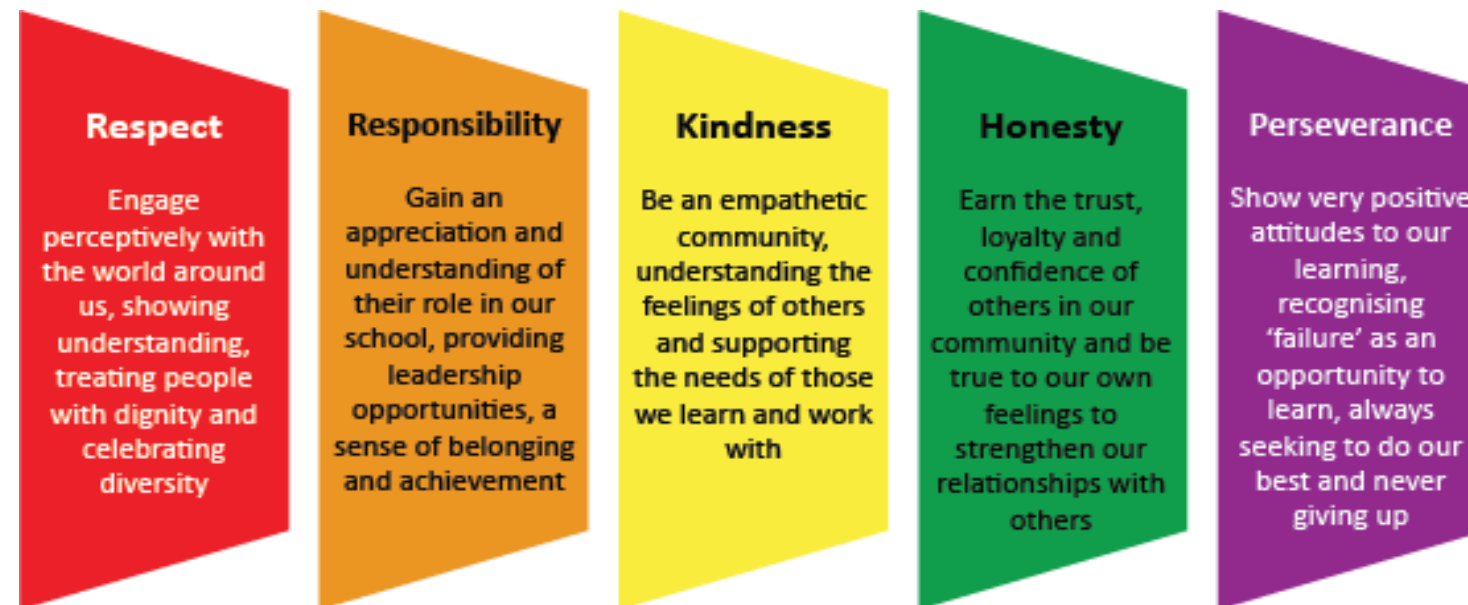
- Living the School's Core Values Everyday:
 - Respect
 - Responsibility
 - Kindness
 - Honesty
 - Perseverance
- Wearing the correct uniform smartly every day.
- Keeping any electronic devices switched off and out of sight, understanding that they will be confiscated if they are seen or heard anywhere on school premises and that the school takes no responsibility whatsoever for their safekeeping.
- Where students are using age-appropriate social media they are doing so respectfully, responsibly and safely.
- Agreeing to abide by the **School Behaviour Policy** and understanding there will be consequences if I fail to do so.
- Conducting myself in line with the school values whilst in and out of school as I accept that as a Marshland student I am an ambassador at all times.
- Always treating our school environment and everyone within our school community with **respect**.
- Listening to and showing **kindness** towards others.
- Being **responsible** for my own behaviour and learning.

I believe I am capable of academic and personal success. I am ready to go above and beyond to realise my potential.

Signed: _____ Date: _____

Pupil name: _____

Marshland High School - Core Values



Behaviour at Marshland High School is based on our CORE VALUES:

RESPECT - At Marshland High School we respect one another at all times, we will understand people's differences. We will respect the school community as a whole, including our school buildings and environment, when representing the school in the wider community, and on our way to and from school. We say "thank you", "excuse me" and "please". We refer to staff as "Sir" or "Miss". All students will treat teachers with respect and be polite. All teachers will treat students with respect and model good behaviour.

RESPONSIBILITY - At Marshland High School we are responsible for our own actions and behaviour. If we make a poor behaviour choice, we may receive a consequence such as a detention. We will accept responsibility for our actions without complaint. When we take responsibility for our actions, we can work towards improving our behaviour in the future and become successful adults.

KINDNESS - At Marshland High School we are kind to one another at all times. If someone falls over, we check that they are ok. If someone drops something, we help them pick it up. We hold doors open for people and we greet others in a kind way. We don't laugh at people, we help them. If we see someone being unkind to another student, we tell a teacher straight away.

HONESTY - At Marshland High School we are honest with ourselves and others. We tell the truth even if this means we may get into trouble. If we are honest we will strengthen our self-esteem and be more successful adults.

PERSEVERANCE - At Marshland High School we will always persevere with everything we do. We try hard in all lessons, not just in our favourite subjects. We realise that we will sometimes fail but that this is an opportunity to learn and get better. We will try hard especially with those things we find difficult. We will never give up. Adults at school will always persevere with students and help them to become the best they can be.