

## Section A—Core Subjects

### Combined Science

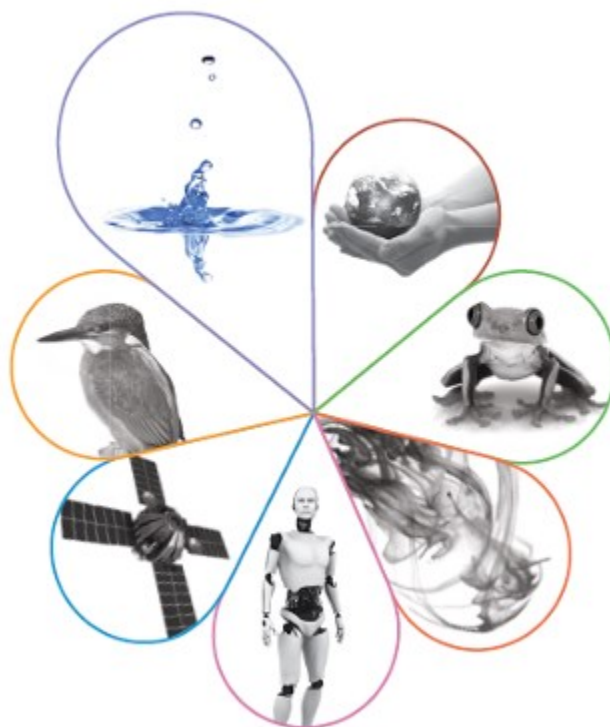
#### GCSE Combined Science

Most students will follow GCSE Combined Science (Trilogy Pathway). This course covers a wide range of interesting and relevant topics in the areas of Physics, Chemistry and Biology.

**Biology** - cell biology, infection and response, bioenergetics, homeostasis, inheritance, evolution and ecology.

**Chemistry** - atomic structure, bonding, chemical and energy changes, organic chemistry, chemical analysis and chemistry of the atmosphere.

**Physics** - electricity, energy, forces, laws of motion, radioactivity, waves and magnetism and electromagnetism.



#### **Assessment and Qualifications -**

The course is assessed in six exams: two each for Biology, Chemistry and Physics. All papers are 1 hour 15 minutes and carry equal weighting. The qualification received at the end of the course is a combined grade where students will receive two grades 9-1, with 9 being the highest grade.



#### The practical element

All students are expected to complete a number of required practicals in Combined Science, these practicals are linked directly to the content students are learning and questions in the exam can ask students about the specifics of these investigations.

#### Where next?:

- All Science courses are highly respected by both further education establishments and employers alike. Whether your next step is Sixth Form, College or an Apprenticeship, GCSEs in Science are highly regarded when considering students in this competitive environment. Alongside this, Science provides skills which can be applied to all aspects of life.
- Although triple Science is preferred by organisations when students are going on to study A-levels in Science, it is still possible to continue to A-level from Combined Science GCSE.

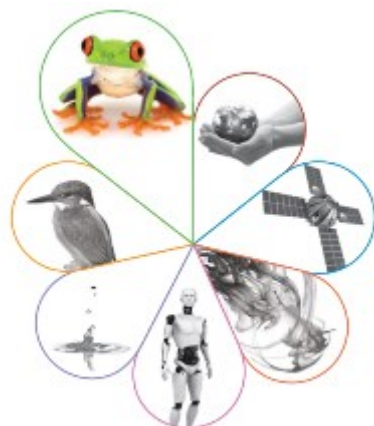


## Section A—Core Subjects

# Triple Science

### GCSE Triple Sciences

Some students will follow Triple Science. This course acts as three separate GCSEs in Biology, Chemistry and Physics therefore students will achieve three separate GCSE qualifications for Science. The content of Triple Science covers the same course structure as Combined Science, but will include content and applications that bridge the gap between GCSE and A-level. This is a challenging non-modular course covering additional topics such as:



**Biology** - microbiology, plant infection and disease, the brain and the eye, controlling blood sugar levels, cloning and food security.

**Chemistry** - use of nanoparticles, percentage yield, titrations, cells and batteries, polymers, chemical spectroscopy and the Haber process.



**Physics** - static charge, pressure in gases and liquids, nuclear fission and fusion, moments, levers, gears, changes in momentum, the national grid, the solar system and red shift.



### Assessment and Qualifications -

Each of the separate courses is assessed by two exams lasting 1hour 45minutes with equal weighting. The qualifications received at the end of the course are separate GCSEs in Biology, Chemistry and Physics which are graded 9-1, with 9 being the highest grade.

### The practical element

All students are expected to complete a number of required practicals in Science, these practicals are linked directly to the content students are learning, and questions in the exam can ask students about the specifics of these investigations.



### Where next?:

- All Science courses are highly respected by both further education establishments and employers alike. Whether your next step is Sixth Form, College or an Apprenticeship, GCSEs in Science are highly regarded when considering students in this competitive environment. Alongside this science provides skills which can be applied to all aspects of life.
- Triple Science is particularly valuable for anyone intending on carrying on Science at A-level, leading into the many courses and careers which depend on a background in Science.